



# Gateway Tirupati



**Jaycon Homes Pvt. Ltd.**

🌐 [www.jaycongroup.com](http://www.jaycongroup.com)

✉ [resorts@jaycongroup.com](mailto:resorts@jaycongroup.com)

## Your Tranquil Retreat in the Heart of Pilgrimage City

Jaycon Gateway is a premium rent-cum-residential property sprawled across 12.5 acres in the serene and spiritually significant city of Tirupati. Renowned as one of the most significant pilgrimage centers for Hindus, Tirupati attracts millions of devotees annually, drawn to the sacred Tirumala Venkateswara Temple. This meticulously designed development offers both 3 and 4-star accommodations, blending luxury and comfort seamlessly. Each unit spans 600 square feet, providing ample space for a comfortable living experience. Jaycon Gateway features state-of-the-art amenities and modern conveniences, catering to both short-term tenants and long-term residents. Its strategic location ensures easy access to major city attractions and the revered temple, making it an ideal choice for those seeking a harmonious blend of spirituality, tranquility, and urban living in Tirupati. This property is designed to feel more like a home stay or hotel rather than a traditional apartment project, providing a unique and welcoming atmosphere for all its guests.





Jaycon Gateway offers deluxe facilities and top-notch amenities, including meticulously maintained suite rooms, all managed by the esteemed Jaycon Group. As a resident, you'll enjoy a worry-free lifestyle with comprehensive maintenance services. This property represents an excellent investment opportunity, giving you the flexibility to own your suite room or rent it out and enjoy a steady income stream. Whether you choose to live in it or let it out, Jaycon Gateway ensures a luxurious and hassle-free experience, making it a prime choice for both personal use and investment. Owners can live freely here whenever they visit Tirupati, and even though maintenance is taken care of by the Jaycon Group, they will share 50% of the rent with the owner as per the agreement.



Suit Rooms



Banquet Hall



Pantry



Indoor Games



Swimming Pool



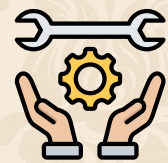
Children Park



Games



Food Court



Maintenance



Best Investment



Green Space

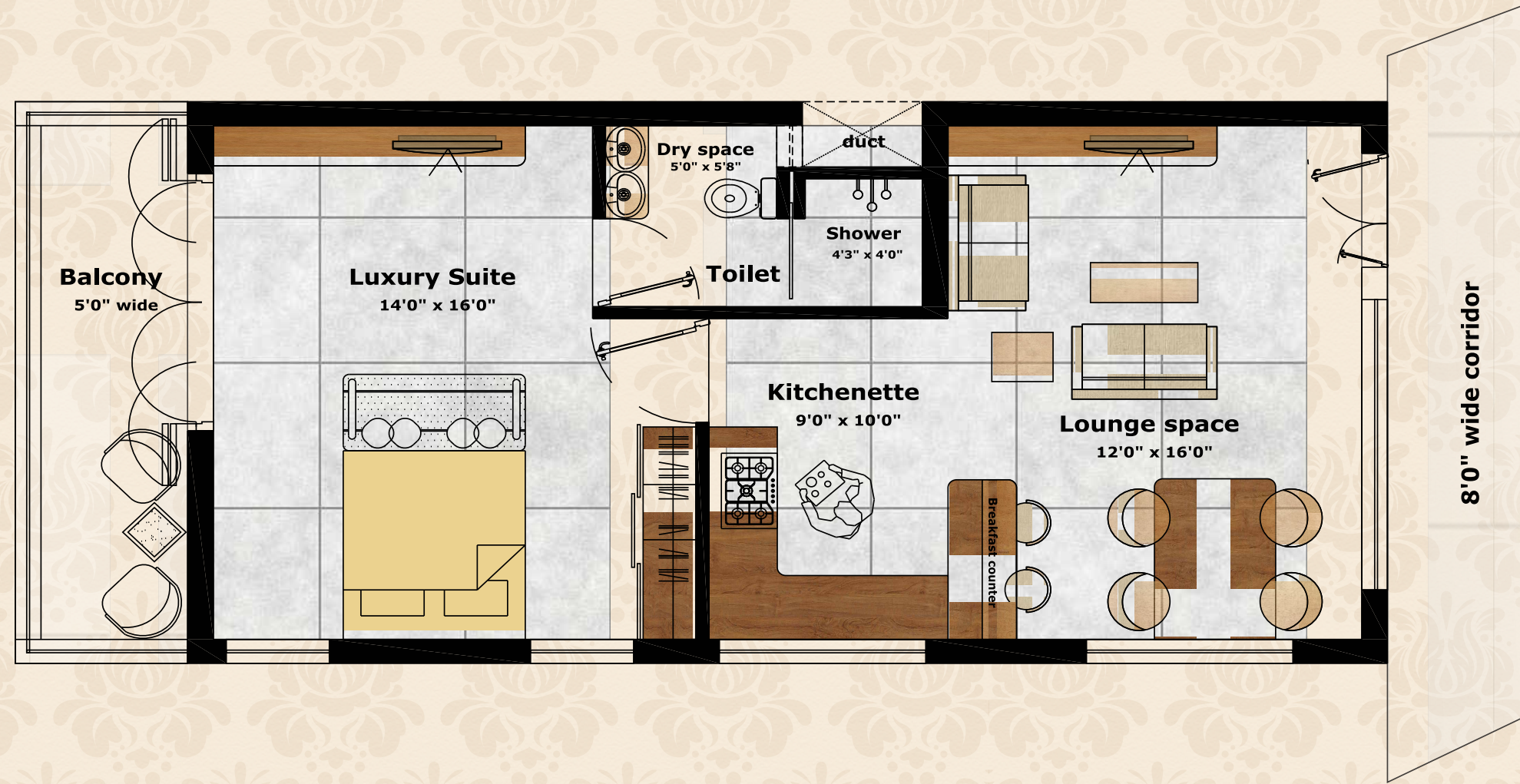


Food Court & Pantry



Bank Loan Available





**Typical Floor plan**

Please note: Images are for conceptual purposes only; actual outcomes may vary.



Investing in Jaycon Gateway is your best decision for a secure and profitable future. With deluxe facilities, including exclusive suite rooms, and comprehensive maintenance managed by the esteemed Jaycon Group, you can enjoy a hassle-free lifestyle. Purchase your suite room and choose to live in it or rent it out for a steady income stream. This property offers unparalleled flexibility and value, making it an ideal investment for both personal use and financial growth.



Images from site



Jaycon Gateway Tirupati stands as a testament to architectural excellence and world-class infrastructure, bringing European-style sophistication to the heart of Tirupati. This prestigious venture is designed with meticulous attention to detail, featuring state-of-the-art amenities and modern facilities that cater to the diverse needs of its residents. The elegant European-inspired architecture seamlessly blends with the serene surroundings, creating a harmonious living environment. Jaycon Gateway Tirupati promises not just a home but an elevated lifestyle experience, combining luxury, comfort, and convenience in one stunning package. Its proximity to significant landmarks such as Shri Bhrahmharishi Ashramam, ISKON Temple, and the Taj Hotel further enhances its appeal, making it an ideal choice for discerning individuals seeking a perfect blend of tradition and modernity.

### Discover Unmatched Convenience

Jaycon Gateway Tirupati is strategically located near prominent landmarks, making it ideal for residents and visitors. Close to Shri Bhrahmharishi Ashramam, it offers a serene retreat. Nearby attractions like Anpalayagunta, Ashok Palace, ISKON Temple, Siddheshwar Matt, and Aivelu Mangapuram enhance its spiritual and cultural appeal. The proximity to the Taj Hotel adds elegance and convenience, while Shilparamam offers a glimpse into the region's rich heritage and crafts. With such a vibrant neighborhood, Jaycon Gateway Tirupati promises a lifestyle blending convenience, culture, and spirituality seamlessly.



Shri Bhrahmharishi Ashramam



Anpalayagunta



Ashok Palace



ISKON Temple



Siddheshwar Matt



Taj Hotel



Aivelu Mangapuram



Shilparamam



Renigunta Airport

